

LM – 6207-6307-6407-6507-6607

POSIFLEX

7" USB LCD Monitor

User's Manual

Rev. : Original



FCC Notes:

This equipment generates, uses, and can radiate radio frequency energy and, if not installed and used in accordance with the instructions manual, may cause interference to radio communications. It has been tested and found to comply with limits for a Class A digital device pursuant to subpart J of Part 15 of FCC Rules, which are designed to provide reasonable protection against interference when operated in a commercial environment. Operation of this equipment in a residential area is likely to cause interference in which case the user at his own expense will be required to take whatever measures to correct the interference.

Warranty Limits:

Warranty terminates automatically when any person other than the authorized technicians opens the machine. The user should consult his/her dealer for the problem happened. Warranty voids if the user does not follow the instructions in application of this merchandise. The manufacturer is by no means responsible for any damage or hazard caused by improper application.

About This Manual:

Posiflex has made every effort for the accuracy of the content in this manual. However, Posiflex will assume no liability for any technical inaccuracies or editorial or other errors or omissions contained herein, nor for direct, indirect, incidental, consequential or otherwise damages, including without limitation loss of data or profits, resulting from the furnishing, performance, or use of this material. This information is provided "as is" and Posiflex Technology, Inc. expressly disclaims any warranties, expressed, implied or statutory, including without limitation implied warranties of merchantability or fitness for particular purpose, good title and against infringement. The information in this manual contains only essential hardware concerns for general user and is subject to change without notice. Posiflex reserves the right to alter product designs, layouts or drivers without notification. The system integrator shall provide applicative notices and arrangement for special options utilizing this product. The user may find the most up to date information of the hardware from web sites: <http://www.posiflex.com> or <http://www.posiflex.com.tw>

All data should be backed-up prior to the installation of any drive unit or storage peripheral. Posiflex will not be responsible for any loss of data resulting from the use, disuse or misuse of this or any other Posiflex product.

All rights are strictly reserved. No part of this documentation may be reproduced, stored in a retrieval system, or transmitted in any form or by any means, electronic, mechanical, photocopying, or otherwise, without prior express written consent from Posiflex Inc. the publisher of this documentation.

© Copyright Posiflex Technology, Inc. 2013

All brand and product names and trademarks are the property of their respective holders.

Power Setup Notice

- ✓ This device is particularly designed for use with a Posiflex system. In such application, it can utilize power support from the Posiflex system.

BRIEF INTRODUCTION

THE PRODUCT

The LM-6x07 7” USB LCD monitor product series are typical of small-sized LCD peripheral. The LM-6x07 can be irreplaceable for a conventional LM (not required for AP modification). The LM-6207 is a stand alone pole customer display designed for discrete POS applications, The LM-6307 is a back cover mount customer display option designed for KS series POS terminals. The LM-6407 is a pole mount type for Gen.5 base stand. The LM-6507/6607 is a back cover mount monitor each for HS and XT series.

FEATURES

- Light weight and high luminance 7” LCD monitor for industrial and commercial use
- Supports display resolution up to 800 x 480 pixels
- Tilt and swivel adjustable construction
- Spill proof and easy maintenance structure allowing easy cleaning
- Stand alone Pole Display (LM-6207), back cover mount (LM-6307), pole mount (LM-6407) for POS application, back cover mount (LM-6507) and (LM-6607) each for HS and XT series
- Powered by USB interface

INSTALLATION GUIDES

PACKAGE CONTENTS

Following are items you may find when you carefully unpack the carton that delivers LM6207/6307/6407/6507/6607 series customer display. If there is any discrepancy or problem, contact your dealer immediately.

Be sure to save the packing materials in case the printer needs to be shipped at some point in the future.

- 1) The 7" LCD monitor with base or fixed bracket
- 2) The user's manual
- 3) USB cable A-type signal cable
- 4) A Posiflex CD included with USB driver

PHYSICAL INSTALLATION

LM-6207/6307/6407/6507/6607 model:

Find a flat surface to site the base of the LM 6207/6307/6407/6507/6607 display. For application operation, find in the bottom of the base the connectors as in the drawing below:



USB interface

USB Interface Connection

To enable connection, install USB interface driver firstly from Posiflex CD with USB driver. Click the file: DisplayLink_7.2M0 for further installation then restart. For driver upgrade, please go to <http://www.posiflex.com.tw> for detailed information of the USB driver installation if required. For immediate PnP function, connect the attached USB 2.0 type A signal cable to the USB port in the host system.

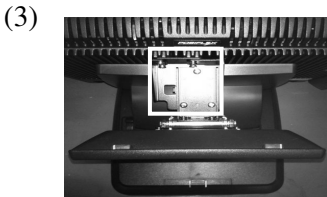
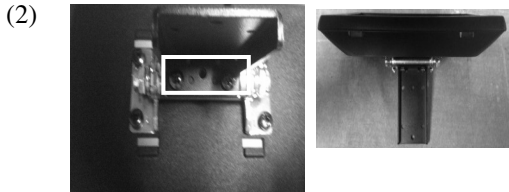
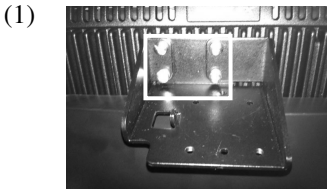
LM-6207 Front View:

The LM-6207 is a stand alone pole customer display as illustrated below.



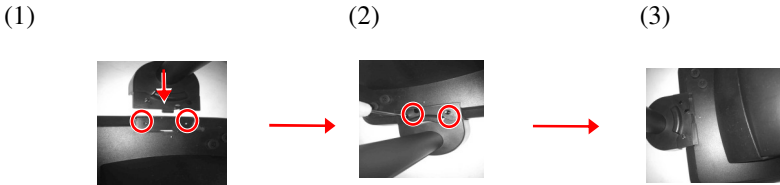
LM-6307 Installation:

The LM-6307 can be attached to the POS upper rear base. Fasten the 4 screws on the upper rear base of KS series machine as illustrated in No1. picture. Then also fasten the 2 screws on the arrowed holes of LM-6307 as illustrated in No.2 picture. Finally attach this base wall mount upgrade 2nd customer display to attached to the upper rear base as illustrated on No.3.



LM-6407 Installation:

The LM-6407 can be attached to the POS rear corner of bottom plate of Posiflex Gen 5th base. Please aim the 2 holes to the arrowed screw which shows in the below No1. picture. Then use the 2 attached Bing head screws to fix the metal base plate of the LM to the bottom of Gen 5th series base as circled in the No 2. picture. The complete installation is illustrated in No3. picture.



LM-6507 Installation:

The LM-6507 is a back mount cover monitor for HS series as illustrated below:



LM-6607 Installation:

The LM-6607 is a back mount cover customer display for XT series as illustrated below:



APPLICATION GUIDES

SPECIFICATION

MECHANICAL

Total Height	480 mm (LM-6207) 460 mm (LM-6407)
Total Width	220 mm (LM-6207) 188 mm (LM-6407)
Total Depth	110 mm (LM-6207) 130 mm (LM-6407)
Display Window Width	188mm(LM-6207/ 6307/6407/6507/6607)
Display Window Height	124mm(LM-6207/ 6307/6407/6507/6607)
Case color	Black (LM-6207 /6307/6407/6507/6607)

ELECTRICAL

Powered from USB interface: 5V, DC 1A

ENVIRONMENTAL

Operating temperature	0° to + 50°C
Storage temperature	-10° to + 60°C
Operating humidity	20% to 85%, non-condensing
Storage humidity	5% to 90%, non-condensing

WARNING: If the user opens the pole display housing to make any modification, all the product warranty will be voided.

NOTE: Please refer to Posiflex Product Information DVD or visit our web <http://www.posiflex.com.tw> for further information needed.

